

A close-up photograph of a car door handle. The handle is dark and has a circular silver-colored button with a stylized 'D' logo. A bright blue light is visible on the handle, creating a lens flare effect. The background is dark and out of focus.

DIRAK®

**SAFETY FOR CONNECTING
MECHATRONIC
LOCKING SYSTEMS**



E-mobility



Heating, ventilation and air conditioning (HVAC)



Telecommunications



Rail transport sector



Medical instrument construction



Traffic engineering and tunnel



Energy plants and environmental technology



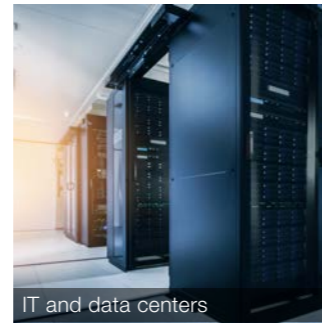
Food processing Industry



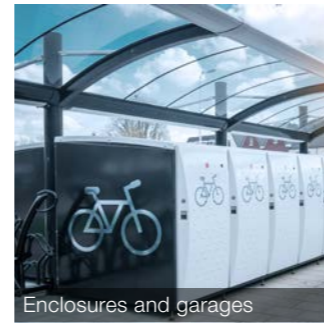
Transport and logistics



Machine-building and plant



IT and data centers



Enclosures and garages

Make the Right Connection: Optimize with Mechatronics Now

The demands on latching systems are continuously increasing – especially due to digitization and the resulting growing possibilities of safety technology in all application areas. A simple lock is often not sufficient for current standards or simply does not offer enough flexibility for complex requirements.

Discover the advantages of mechatronic products now. Control access more effectively by accurately documenting and managing every access. Reinforce security in especially sensitive protected zones. In short: Find the best solutions for your application fields with DIRAK's mechatronic locking systems.





 MLE 1102



The Sturdy Handle

The perfect partner for smart applications is the Swinghandle MLE1102. It can be easily integrated and controlled in already existing management systems. The handle can withstand the effects of weather, thanks in part to its UV-resistant powder coating and IP65 impermeability. In addition to black (RAL 9005), this swinghandle is also available in gray (RAL 7038) to perfectly match the installation situation.



Ready for opening visualized by LED.

The MLE 1102 Swing-handle is safety tested according to DIN EN 1630 RCII and is therefore suitable for use in public areas.

Emergency opening by means of profile cylinder according to DIN 18252, alternatively available with patented emergency cylinder.

 MLE 1102 LED



Mechatronic Protection of Machines and Housings

6 MLI latching solutions provide you with the best protection by connecting to the control system of plants and machines. The swinghandle is locked mechatronically and can also be opened by key. An LED visualizes for the user when the swinghandle is ready for opening. The latch position of the handle can be evaluated. This increases operator safety and protects machine processes. Also available as variant with square insert (8mm).



 MLI 1101



Quarter-Turn with Power

More control and protection thanks to evaluable quarter-turn: Increase security on industrial machines and housings with precise mechatronic access control. The MLI quarter-turn can also be integrated into existing management systems.



 MLI 1102





 MLR 1000



The Smart Handle

The MLR 1000 ensures precise access documentation and has been optimized especially for sensitive security areas in industrial plants. These swinghandles were developed for integration into existing management systems. The status LED provides an additional plus in terms of clarity. And the variably illuminated information field makes it easy to customize these handles. An emergency power interface has also been provided.

Simply connect, open in a controlled manner, lock precisely.

The MLU 1002 and MLU 1003 electronic Rotary Slam Latches ensure a high level of security because the locking status can be evaluated. In addition, premium high-end materials ensure high load capacity and durability. Both latches can be connected to existing management systems. The exceptionally strong holding force and concealed installation increase the safety of any application.



 MLU 1002



The MLU 1003 electronic Rotary Slam Latch provides additional security: It indicates not only the locking status, but also the door status.



 MLU 1003





Quarter-turns



Swinghandles



Customer-specific solutions



Rod latches



Fastening technology



Handles



Hinges



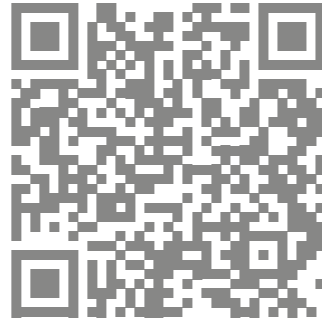
Mechatronic locking systems



Gaskets



Latches

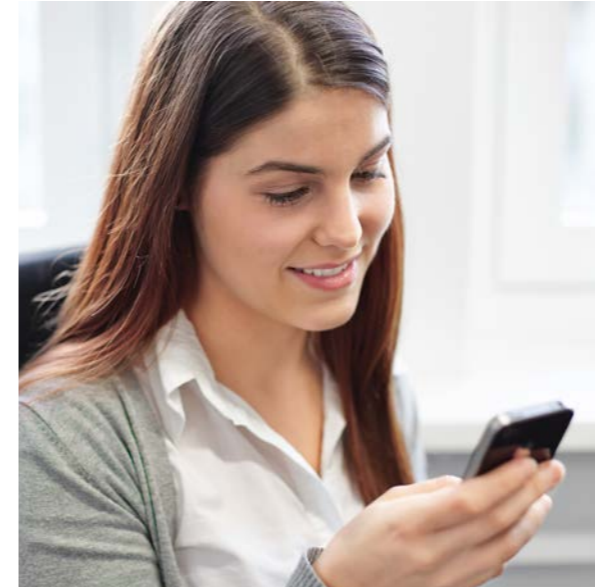


By the way: You can find these and other products on our website.

Always the Best Product for Your Application

At the center of our activity is the constant desire to find the best product and with it the optimal solution for your application. Meeting your specifications and fine-tuning our development to them is what we do. Whether swinghandle, quarter-turn, hinge, fastener, sealing profile or a system or individual part specifically manufactured according to your data – we take great care and our processes are oriented to ensure that both the consulting and the product you receive meet your quality standards. To do this, we use whatever means we have entirely for your benefit. In addition, development-stage prototypes and various load tests are just as important to each process as the logistics to safeguard your required supply chain.

From the concept stage to when the order is fulfilled and delivered, we always focus on your requirements and are at your side as a reliable partner, even after the project has ended.



Knowledgeable Contact Partners

+49 (0) 2333 837-0

info@dirak.de



Find your contact person.

Do you have questions about our products or would you like a personal consultation? You can reach us at any time. Simply enter your zip code in the contact form on our website to find the direct contact person in your area.



**DIRAK Dieter Ramsauer
Konstruktionselemente GmbH**

Königsfelder Straße 1
58256 Ennepetal, Germany
info@dirak.de
Tel.: +49 (0) 2333 / 837-0
Fax: +49 (0) 2333 / 837-103